

Juha Helenius
Helsingin yliopisto
alustus paneeliin:

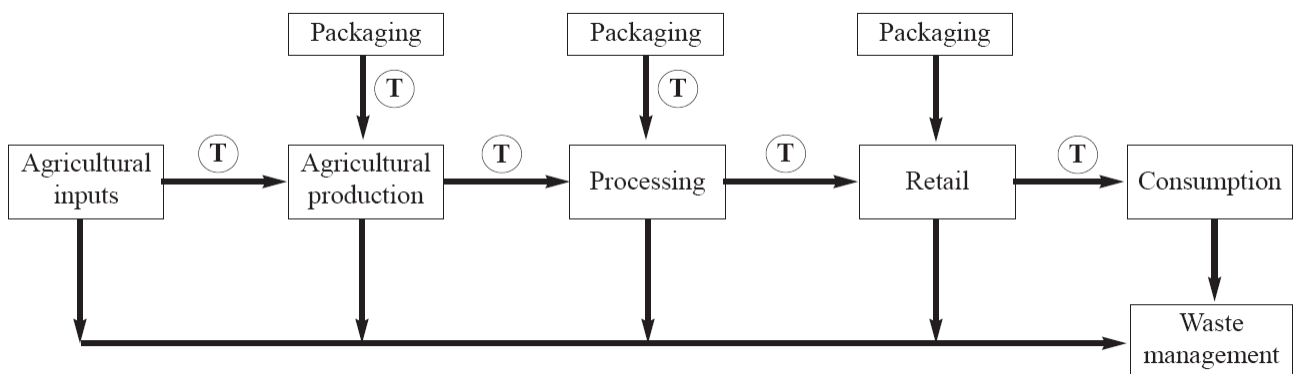
Millaista maataloustutkimusta?

Suomen maataloustieteellisen
seuran (1909 -2009) seminaari,
Tieteiden talo, 11.2.2009



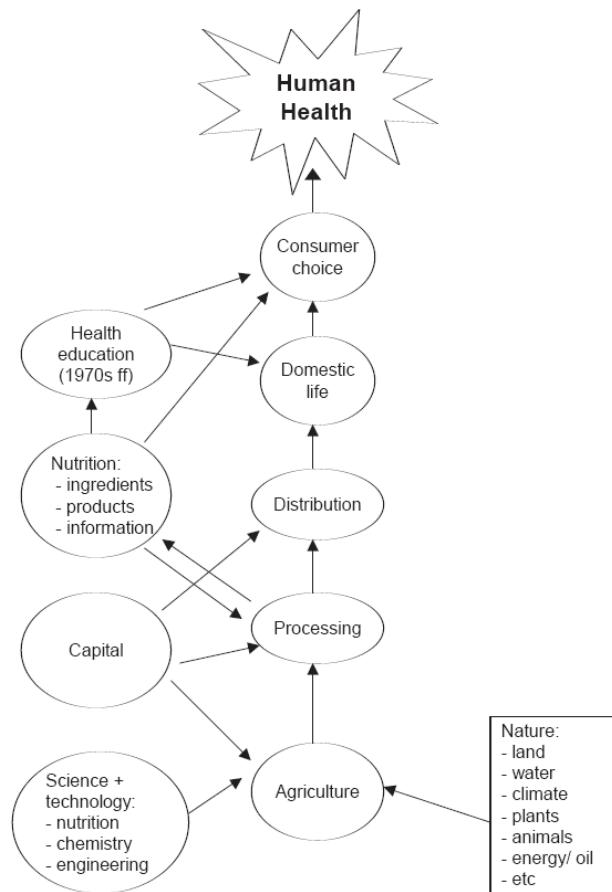
Photo: Tropical forest is being cleared for growing soya for export in Brazil. A protected tree species, Brazil Nut, has been left standing. **Daniel Beltra**, eblog.greenpeace.org/makingwaves/amazon.jpg

- *J. von Braun*, director of the International Food Policy Research Institute IFPRI:
 - Right to food should be taken as a foundation for agricultural and food policies.

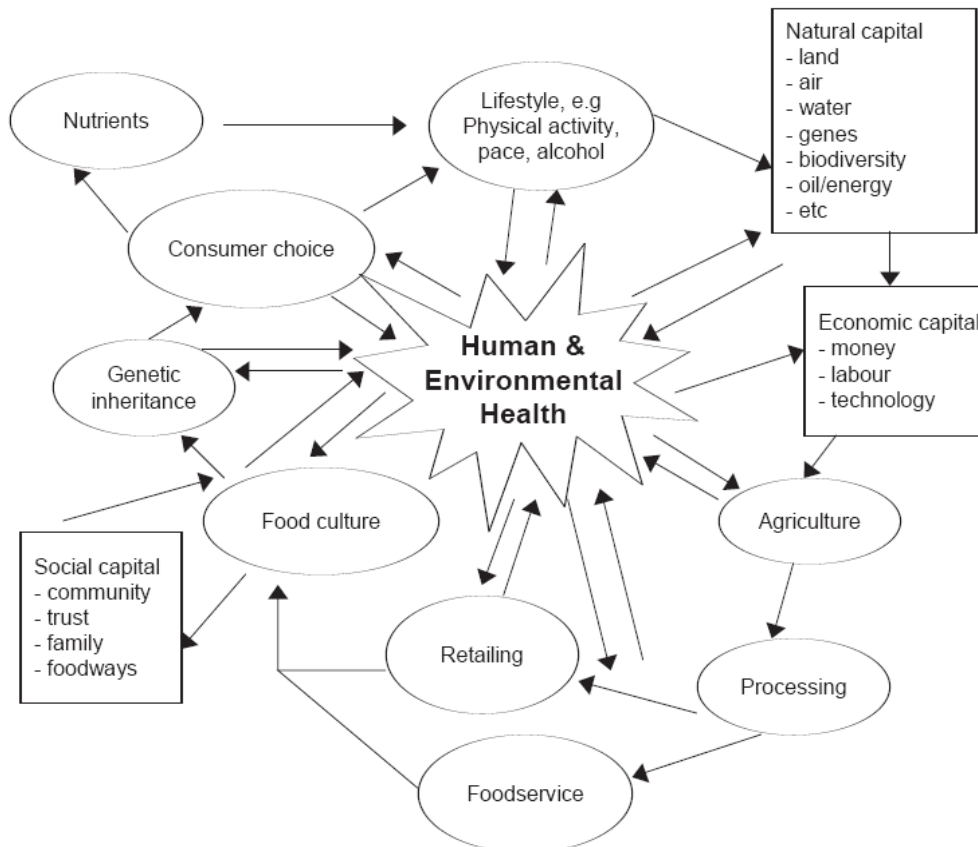


Key:

Figure 2: Production-oriented approach to health (1950s ff)

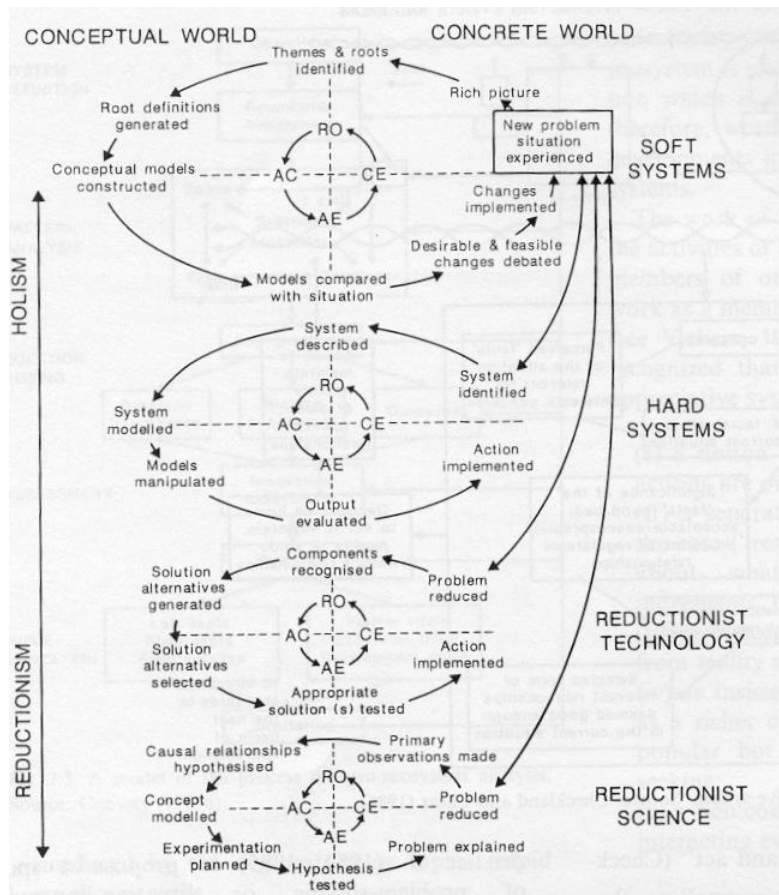


<http://www.eurofound.europa.eu/emcc/publications/2004/ef04112en.pdf>



"Ecologically integrated approach to food production and consumption systems.

<http://www.eurofound.europa.eu/emcc/publications/2004/ef04112en.pdf>



Source: adapted from Kolb (1984) and Bawden (1985) in Bawden, R.J. & Ison, R.L. 1992. The purpose of field-crop ecosystems: social and economic aspects. In: Pearson, C.J. (ed.) Field Crop Ecosystems. Ecosystems of the World. Elsevier, Amsterdam.